

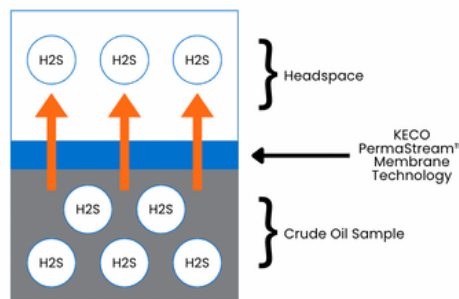
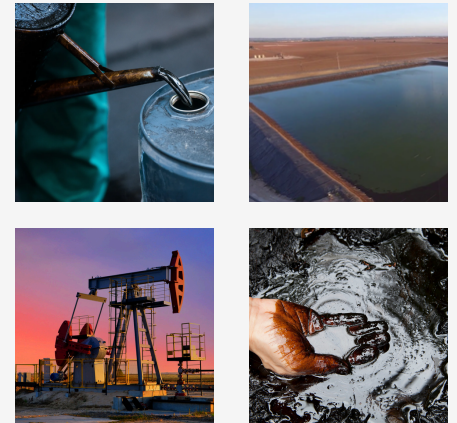


Model 205 PermaStream

The KECO Model 205 PermaStream Analyzer provides dependable, real-time measurement of H₂S in liquids with unmatched simplicity. Its membrane-based design and advanced detection system eliminate false positives, reduce maintenance demands, and deliver precise results—helping operators ensure safety, compliance, and efficient operations with confidence.

Applications

- Crude Oil (light, medium, heavy)
- Diesel
- Fuel Oil
- Produced Water
- Condensate
- Dirty/Clean Water
- Amine
- Free flowing liquids



Benefits

- 80 readings per minute
- H₂S-specific — no false positives
- No field calibration needed
- Linear response — no drift
- Wide range: ppb to %
- Membrane technology
- Samples at process pressure flow and temperature

Operational Impact

- Rapid real-time process control
- Prevents overdosing and false alarms
- Minimizes maintenance and downtime
- Delivers stable & accurate data
- Broad detection
- Shields sensor from contamination
- Removes need for conditioning



Scan to know
more about
KECO Model 205
PermaStream



Specifications

DISPLAY

- Alpha Numeric LCD
- 128 x 64 pixel
- Back-lit display

TEMPERATURE RANGES

- 1°C to 50°C (operating) without cooling/heating
- 0°C to 70°C (storage)

ANALOG

- 4-20mA Isolated

ANALYTICAL PERFORMANCE

- Resolution: 1 ppb
- Accuracy: ±2%
- Repeatability: ±1%
- Linearity: ±1%
- Drift: Nil
- Temperature Coefficient: 0.01% / °C
- Analysis time: 0.75 Second

DETECTION RANGES

- 0-1 ppm
- 0-10 ppm
- 0-50 ppm
- 0-100 ppm
- 0-500 ppm
- Percent ranges
- Customer specified (contact factory)

SAMPLING SYSTEM

- Carrier Air/Gas requirement: 15 psig constant and 150 ml/min flow rate
- Liquid requirement: Minimum 0.5 L/min flow and maximum 1,480 psig @ 100°F
- Max sample temperature at the analyzer inlet 55°C

WEIGHT

- ~175 lbs (analyzer only, no options)

DIMENSIONS

- 3 ft x 3 ft x 1.5 ft

UTILITIES/SETTINGS

- 120VAC 3A or 240VAC 1.5A
- 100 Watts normal, 700 Watts max
- Carrier Air/Gas: 180 ml/min (15 psig max)
- Sample flow: 0.5 L/min minimum
- Sample pressure: 1,500 psig max

AREA CLASSIFICATIONS

- Class 1 Division 1
- Class 1 Division 2
- Zone 1 or Zone 2

AVAILABLE OPTIONS

- Concentration relay alarms
- Diagnostic/fault relay alarms
- Low flow relay alarms
- RS-232/485 Modbus
- Data Logger for data download to PC
- Remote monitoring/control with PC
- Automatic calibration

TECHNOLOGIES

- PermaStream™ (ASI Membrane Technology)
- Rateometric-Colorimetric Tape

KECO provides design and application engineering assistance for the User's analyzer requirements. For a quotation, please complete Analyzer Quote Request Form at kecosystems.com/quote

KECO reserves the right to make revisions and or changes without notice. KECO shall not be liable for any errors or omissions made or any damages resulting from the use of the analyzer, information, or the manual. © 2025 Printed in the USA.