

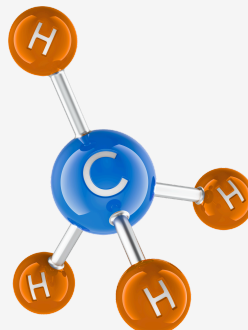


MethaneHound

The MethaneHound provides precise, real-time methane analysis using a durable NDIR sensor. Built for hazardous locations, it offers low maintenance, long-term reliability, and easy integration with existing systems, ensuring continuous monitoring in gas processing, biogas, and landfill applications.

Applications

- Gas Processing Facilities
- Natural Gas Pipeline
- Chemical Plants
- Gas Well Testing & Analysis
- Landfills
- Biogas

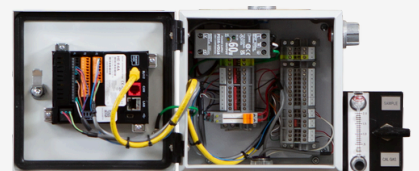


Benefits

- Real-time methane monitoring
- Low maintenance, long-lasting NDIR sensor
- Hazardous location certified
- User-friendly touchscreen with data logging
- Accurate sample flow control

Operational Impact

- Optimizes processes with real-time methane data
- Cuts downtime, minimal maintenance
- Lowers operational costs
- Improves safety with methane-leak detection
- Easy system integration



Scan to know
more about
KECO
MethaneHound



Specifications

RANGE

- 0-5%, 0-100% Vol.

RESOLUTION

- 0.01% for readings up to 10% volume
- 0.1% for readings from 10% up to 100% vol.

REPEATABILITY

- $\pm 3\%$ of Full Scale

ACCURACY

- $\pm 3\%$ of Full Scale

PRESSURE

- $\pm 5\%$ of the calibration pressure to maintain accuracy limits

TEMP PERFORMANCE

- $\pm 10\%$ of reading up to 50% full scale and $\pm 15\%$ of reading from 50% to 100% full scale

RESPONSE TIME

- T90 = less than 60 seconds

POWER

- 10/220VAC 50/60 Hz or 24VDC (1.1 amps max)

OUTPUT

- 4-20mA DC (self-powered)
- RS-485 Modbus
- TCP/IP Ethernet Modbus
- Concentration alarms via Modbus
- Diagnostic Alarms via Modbus

ELECTRICAL CLASS

- Class I, Div 2 (Zone 2) Groups B, C, D

HUMIDITY

- 0-95% RH non-condensing

RELAY RATINGS

- SPDT Relays, 250 VAC at 10 amps (conc. alarm, diagnostic alarm)

OPERATION TEMPERATURE

- -10°C to 50°C

OPERATION PRESSURE

- Max pressure input 100 psig (optional pressure regulator/gauge available)

WEIGHT/DIMENSIONS (Approx.)

- Height: 20 inches
- Width: 12 inches
- Depth: 7 inches
- 40 lbs

FEATURES

- Data Logger (SD card separate)
- Enclosure for outdoor environments (UL listed, CSA rated, IP66)
- Sample flow rate is 1.5 SCFH on sample requirement

OPTIONS

- Alarm relays (SPDT, 250 VAC @ 5 Amps)
- Isolation of 4-20 mA and Ethernet
- Solar System (panels, mounting pole, batteries, controller)
- H2S Scrubber for vent
- Fugitive Emission Control Unit for vent
- Sampling System (Simple): Pressure regulator/gauge
- Sample System for Gasses Entrained with Light Liquids: Pressure regulator/gauge, Liquid Block, by-pass with needle valve
- Sampling System for LPG, LNG (heated)
- Sample Probe to be installed at tap point
- Self-standing rack (includes sun/rain shield, drip pan, fork lift holes, foundation mount holes; can mount analyzers on front and back)

KECO provides design and application engineering assistance for the User's analyzer requirements. For a quotation, please complete Analyzer Quote Request Form at kecosystems.com/quote

KECO reserves the right to make revisions and or changes without notice. KECO shall not be liable for any errors or omissions made or any damages resulting from the use of the analyzer, information, or the manual. © 2025 Printed in the USA.